



Corbett Road, Walthamstow, London

An attractive three-bedroom brick-fronted home with a distinctive square bay ideally positioned within walking distance to Wood Street Station.

The ground floor opens with a bright bay-fronted lounge, featuring large windows and stripped wooden flooring and adjacent is a second reception room, equally well presented with stripped wooden floors and a charming fireplace —ideal for use as a dining room or home office.

To the rear, the property benefits from an extended kitchen, thoughtfully designed with skylights that flood the space with natural light. This area also includes a separate utility space, a convenient downstairs W/C, and access to a small courtyard. Leading off the kitchen is an additional sun room, providing direct access to the private rear garden.

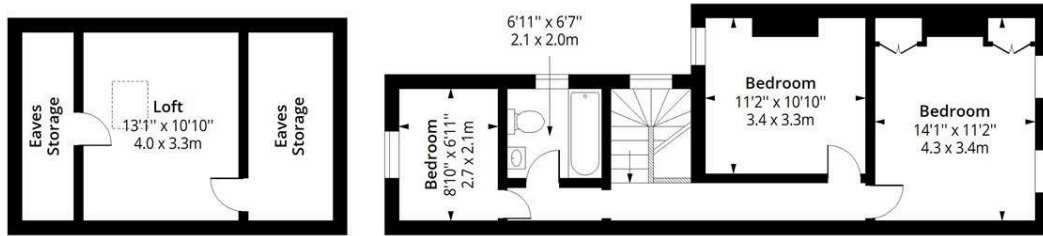
Upstairs, the principal bedroom spans the full width of the house and features stripped wooden flooring along with built-in wardrobes. A well-proportioned second bedroom comes next, while a third bedroom is located at the rear. The family bathroom completes this floor.

The property also benefits from an additional loft room with useful eaves storage, offering flexible extra space.

Externally, there is a long private rear garden extending to approximately 50ft, providing an excellent outdoor retreat.

- Mid Terrace House
- Wood Street Location
- Private Rear Garden Approx 50ft
- No Onward Chain
- Extended Kitchen/Diner
- Additional Loft Room
- 0.4m To Wood Street Station
- 1363 Sq Ft (126 SQ M)

£650,000

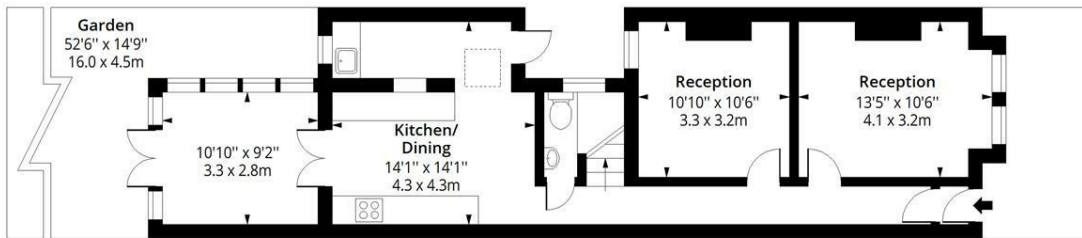


Second Floor

Floor Area 142 Sq Ft - 13.19 Sq M

First Floor

Floor Area 520 Sq Ft - 48.31 Sq M



Ground Floor

Floor Area 701 Sq Ft - 65.12 Sq M

Corbett Road E17



Approx. Gross Internal Area
1363 Sq Ft - 126.62 Sq M

Approx. Gross Eaves Storage Area
1303 Sq Ft - 12.08 Sq M



Measured according to RICS IPMS2. Floor plan is for illustrative purposes only and is not to scale. Every attempt has been made to ensure the accuracy of the floor plan shown, however all measurements, fixtures, fittings and data shown are an approximate interpretation for illustrative purposes only. 1 sq m = 10.76 sq feet.

